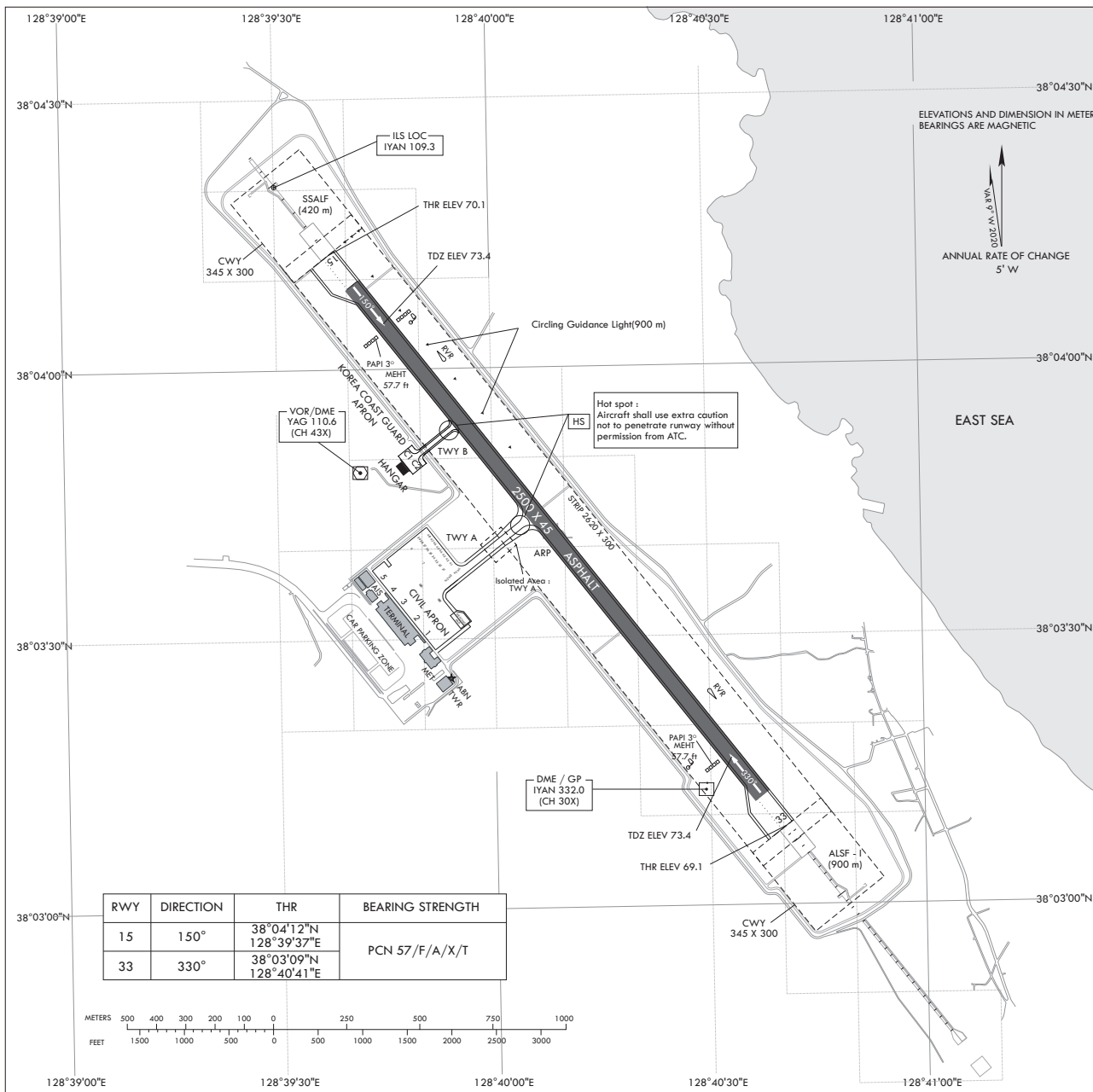


AERODROME  
CHART - ICAO

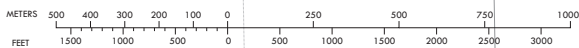
38°03'41"N  
128°40'09"E ELEV 73 m

TWR 118.85  
124.375 240.4  
GND 124.3 240.4

YANGYANG/Yangyang Intl



RWY	DIRECTION	THR	BEARING	STRENGTH
15	150°	38°04'12"N 128°39'37"E	PCN 57/F/A/X/T	
33	330°	38°03'09"N 128°40'41"E		



MARKING AIDS RWY 15 / 33 AND EXIT TWY



LIGHTING AIDS RWY 15 / 33 AND EXIT TWY

